

Advanced Environmental Instrumentation

Harnessing the Power of Mobile Computing



✓ Surveyed

✓ Documented

✓ Reported



Example Screens

Trend Log	
File	Log Probe View
Ozone	0.00 ppm
Ammonia	1.9 ppm
Sulfur Dioxide	0.0 ppm
Nitric Oxide	0.0 ppm
Hydrogen Sulfide	0.00 ppm
Temperature	27.1 °C
Relative Humidity	72.1 %RH

Live Display	
File	Log Probe View
Carbon Dioxide	460 ppm
Nitrogen Dioxide	0.00 ppm
Carbon Monoxide	1.8 ppm
Temperature	70.9 °F
Relative Humidity	37.7 %RH
Dew Point	43.9 °F
ΔP	0.006 inH2O
Air Speed	310.6 ft/m
Volume Flow	549 cfm

Text Notes	
File	Log Probe View
WolfSense	Workers in this area are complaining about frequent eye and nose irritation when they spend anything more than a few minutes here.



ADVANCEDSENSE® BE

Environmental Test Meter (Basic Edition)



GRAYWOLF®
SENSING SOLUTIONS
Ph. 1-203-402-0477

Email:
Salesteam@GrayWolfSensing.com

Website:
www.GrayWolfSensing.com

GrayWolf is transforming the way that environmental measurements are taken. The AdvancedSense BE meter runs highly advanced, very user-friendly application software. Display, data-log and annotate (on-site) a broad range of parameters with a single, rugged, cutting edge instrument.

- Connect a GrayWolf DirectSense® probe, from a choice of various models, with up to 8 sensors per probe
- Available sensors; differential pressure, airspeed, TVOCs, CO₂, %RH, °C/°F, CO, O₃, NH₃, H₂S, NO, NO₂, SO₂, Cl₂, HCN, HF, HCl, F₂ and other parameters
- Backlit color touch screen
- Data files simply auto-name or choose descriptive data file names
- Highly intuitive and extremely Easy-To-Use
- **Feature rich** with productivity tools that make your environmental surveys more efficient, more detailed, more reliable:
 - Microphone for audio documentation of surveys
 - Virtual keyboard for text notes that auto-attach to data files and for detailed data file naming
 - Speaker for audio queues/playback and more
 - On-board educational info, application docs, help videos, user tips and more
 - Data transfer & reporting software for trend graphs, note management and much more



ADVANCEDSENSE® BE

Environmental Test Meter (Basic Edition)

SPECIFICATIONS:
(for additional sensor/probe specifications refer to GrayWolf's DirectSense® probe, pitot tube and thermocouple brochures)

General:

Dimensions: 96.0mm (3.8in.) w. x 177mm (7.0in.) h. x 47.0mm (1.8in.) d.

Construction: Rugged polycarbonate plastic with rubberized side grips. IP64

Weight: 700gr (1lb 8.5oz.) Add 50gr (1.5oz.) for auto-zeroing, auto-ranging ΔP option

Screen Size: 3.5" HVGA 320 x 480 color touch screen with backlight

Memory: 32GB for data-logging (millions of readings) and notes (text/audio), help videos and documents

Audio: Integral electret microphone (on front, for audio recording) and 8 ohm speaker (on back, for audio queues, help videos and audio note replay)

Mounting: 1/4" - 20 thread (on back) for belt clip, etc. (& for included mini tripod/stand)

Operating Range: -10°C to 50°C (15°F to 122°F), 0 to 100 %RH non-condensing

Connectors:

1 x Lemo 8F pin for GrayWolf DirectSense probe

1 x Lemo 7F pin for RH-AS2 direct-connect TRH probe

1 x USB mini B socket. 1m mini USB B to USB A download cable supplied as standard

1 x 12V, 2.1mm DC power socket

Optional: 2 x 4mm posts for differential pressure tubing

Power:

Battery: 4250 mAh Lithium Ion rechargeable

Battery Life: 16+ hours typical for new battery with backlight off (and probes self-powering)
The AdvancedSense BE can power DirectSense probes. Battery life will vary when powering probes or pressure sensors

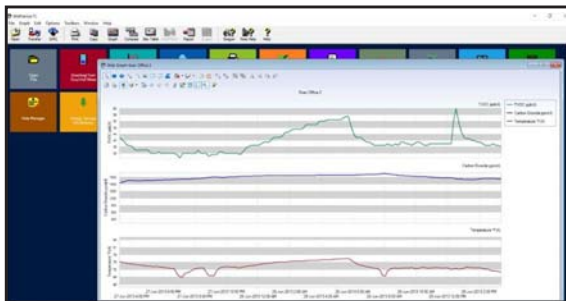
Recharge time: 4 hours typical. Red/green front LED displays charging/fully charged status

Power supply: 100/240VAC, 50-60Hz, 12VDC external charger. Specify local plug
All specifications are subject to change without further notice

Optional Built-in Sensors:

	Differential Pressure (DP-702LH)
Range	±10,000Pa, ±40 inH ₂ O, ±1000 mmH ₂ O, ±100 mbar, ±70 mmHg
Resolution	0.1 Pa, 0.001 inH ₂ O, 0.01 mmH ₂ O, 0.001 mbar, 0.001 mmHg
Accuracy (auto-zeroing enabled)	±1% of rdg ±0.1Pa up to 250Pa, ±1%rdg ±4Pa >250Pa (±1% of rdg ±0.001 inH ₂ O to 1.000 inH ₂ O, ±1%rdg ±0.015 inH ₂ O >1.000 inH ₂ O)

Differential Pressure is auto-ranging for exceptional low-end detection, yet a broad range. For exceptional accuracy, it is also auto-zeroing (every 2 minutes by default but zeroing frequency is user adjustable to 5 minutes or OFF)



▶ **WolfSense® PC** data transfer and analysis software supplied as standard

Measure Smart



Report Efficiently



2m dual tubing is supplied with optional differential pressure sensor. GrayWolf offers a selection of pitot tubes for air velocity. ▼



PCC-AS01 pouch with neck-strap for hands free surveys. Also hand-strap/belt-loop. ▼



▲ **PCC-20A** Hardshell case holds AdvancedSense BE, probes (DSII internally, or extended during secure monitoring) & accessories.

Advanced Reporting Software, Calibration kits and other accessories are available from GrayWolf. View them online at: www.graywolvesensing.com/accessories/



GRAYWOLF SENSING SOLUTIONS
6 Research Drive (Worldwide Headquarters)
Shelton, CT 06484 USA
Ph. (1)203-402-0477
800-218-7997

Email: Salesteam@GrayWolfSensing.com
www.GrayWolfSensing.com

GRAYWOLF SENSING SOLUTIONS
Annacotty Industrial Park, Unit 1C
Annacotty, County Limerick
V94 PR2Y Ireland
Ph. (353) 61358044