

profometer®

The all-in-one solution for rebar assessment and corrosion analysis



New Feature
2-Layer Neighboring Rebar
Correction Artificial Intelligence

- ASTM
- DIN
- BS
- SN
- DGZFP
- SIA
- UNI
- JGJ/T
- JSCE



Interactive

Full flexibility

- ✓ Upgrade anytime between cover meter and corrosion analysis instruments
- ✓ Easily switch the probes of the combined instrument
- ✓ New technologies will be added to further increase application range

High productivity

- ✓ Easy and immediate data interpretation with 2D grid and statistical views
- ✓ Dual-core processor for fast data acquisition
- ✓ Dedicated software for efficient custom reporting

User friendliness

- ✓ Profometer touchscreen with illustrative display and assisted workflow
- ✓ On-site post processing of the measured data
- ✓ Rugged housing for harsh environments



Profometer Corrosion interface box
Ready to connect half-cell electrodes to your Profometer unit

profometer®

Speed-up your measuring and reporting!

Profometer 6 Cover Meters

- ✓ Advanced cover meters and rebar locators based on the eddy current pulse induction principle
- ✓ Assisted scan of any surface regardless of its size and geometry
- ✓ Universal probe and detachable ruggedized cart with wireless path measuring system
- ✓ Complies with international standards BS, DIN, DGZfP, SN, SS, DBV



Profometer Corrosion

- ✓ Most versatile half-cell potential solution
- ✓ Proceq's unique wheel electrodes allow the fastest and most efficient on site testing
- ✓ Compatible with existing Canin and most third party electrodes
- ✓ Complies with international standards ASTM, RILEM, DGZfP, SIA, UNI, JGJ/T, JSCE



[Find out more](#)

[Find out more](#)

Proceq – History of Innovation since 1954





Proceq SA of Switzerland, founded in 1954, is a leading manufacturer of the highest quality portable instruments for non-destructive testing of materials. The popular Original Schmidt concrete test hammer, the patented SilverSchmidt (Q-value) and the Carboteq are just an excerpt of Proceq's proud inventions.

Revolutionary Profometer Touchscreen

As direct successors to the Profometer 5+ and Canin+ models, the **Profometer 6 instruments** continue the successful tradition that began 40 years ago representing the sixth Profometer generation.

In its current version the Profometer brand extends its features to cover additional methodologies related to the testing of reinforcement steel, incorporating both rebar assessment and corrosion analysis functionalities, thus replacing the world renowned Canin instrument for corrosion.

- ✓ Housing specially designed to be used on-site in harsh environments, including carrying strap, integrated stand and sunshield cover
- ✓ High resolution colour touchscreen allowing best possible measuring and analysis of the data for an entire working day (battery lifetime >8h)
- ✓ Dual core processor supporting diverse communication and peripheral interfaces
- ✓ Future proof investment through direct upgrade possibilities to upcoming Profometer products

	Profometer 6 Cover Meters			Profometer Corrosion
	Profometer 600	Profometer 630 AI	Profometer 650 AI	
				
	For safe drilling, coring and cutting, conformity check of concrete cover, fire resistance assessment and rebar assessment on unknown structures			For corrosion analysis
Rebar Location				
Cover Measurement				①
Diameter Estimation				
1-Layer NRC				
2-Layer AI				
Cover Calibration				
Single-Line Scan	③			① + ③
Multi-Line Scan				
Area Scan				
Cross-Line Scan	③	③		① + ③
Corrosion Potential	②	②	②	

Functionality

- ① ② Upgrade kits available (attachable hardware)
- ③ Software upgrades available (activation key)

 See how easy you can upgrade your instrument

A new Industry Benchmark in Cover Measurement Accuracy

Artificial Intelligence (AI) Cover Estimation

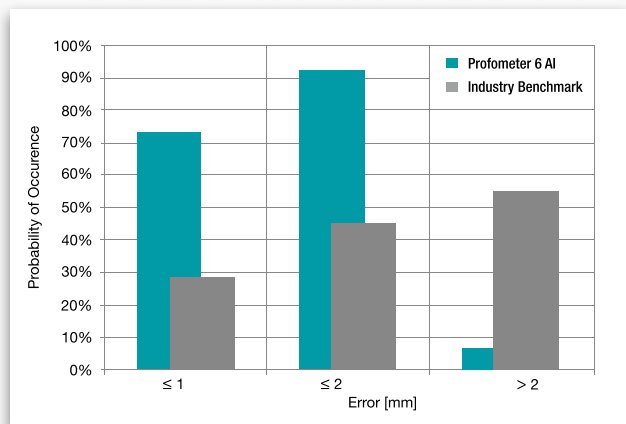


The Profometer 630/650 AI models set a new benchmark in cover reading accuracy. The new artificial intelligence cover estimation feature is based on a self-learning algorithm, with the ability to estimate cover for two layer rebar configurations. The Profometer AI models yield the most accurate cover readings for standard orthogonal two layer rebar configurations with a over 90% probability that first layer cover measurements are within a 2 mm accuracy.

Cover Calibration

This feature allows the new Profometer AI models to be calibrated on-site. Simply measure the actual cover to an exposed rebar and enter this value into the Profometer AI. This data will then be used to optimize the cover measurement over the whole measurement area. Only one such reference cover value needs to be entered and this highly flexible feature is independent of the rebar geometry and cover depth.

- ✓ Both features are included in the Profometer 630/650 AI models
- ✓ Existing Profometer 630/650 users can simply purchase an upgrade kit to enable these features:



392 00 201



Upgrade kit from Profometer 630 to 630 AI

consisting of software upgrade (activation key) and ruggedized cart for Profometer 6 universal probe

392 00 202



Upgrade kit from Profometer 650 to 650 AI

consisting of software upgrade (activation key) and ruggedized cart for Profometer 6 universal probe

New Ruggedized
Scan Cart

Broad wheels with soft rubber for high stability and precise positioning even on irregular surfaces

Ruggedized housing structure for maximum durability in harsh testing environments

Large diameter wheels prevent locking caused by the ingress of dirt and debris

Integrated spot probe for measurements in corners and LED indicating proximity and location of rebars

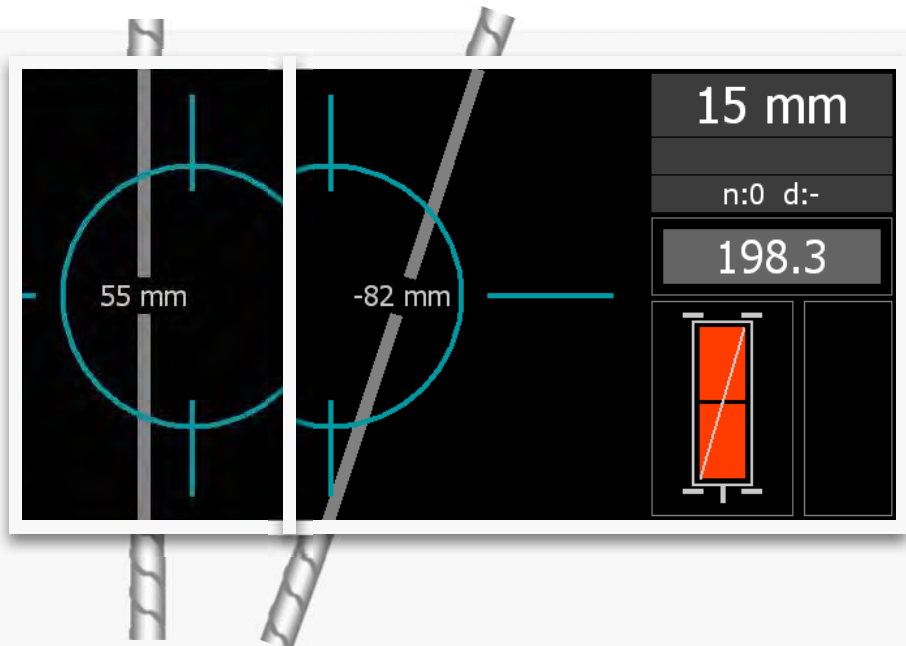
Profometer 600 Overview

Profometer 600 is the ideal instrument for contractors who need to avoid damages to the reinforcement steel when drilling, coring or cutting. It additionally covers the needs of inspection engineers to locate rebars and to assess concrete cover values and rebar sizes for spot checks.

Locate Mode

With the Locate Mode you can precisely detect the rebar location and direction as well as measure the cover and the rebar diameter.

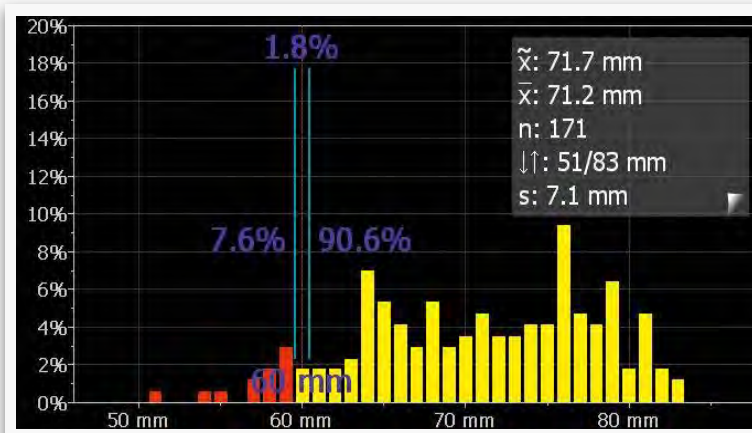
- ✓ Visual assistance for speed and signal strength control
- ✓ Settings directly accessible on the measurement screen
- ✓ Spot Probe specially for areas with congested rebar arrangements
- ✓ Automatically detects inclined rebars



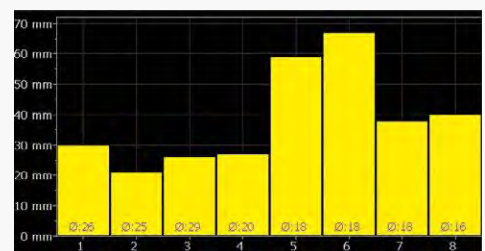
Statistics & Snapshot Views

The statistics and snapshot views allow comprehensive review of the measured data directly on the screen.

The statistics view presents a graphical overview of the distribution of cover measurements. The snapshot view shows cover for each rebar with the diameter displayed as a number.



Snapshot view



- ✓ Graphical display of measured values and minimum cover set
- ✓ Easy inspection of the measured values directly on the screen
- ✓ Change settings before and after storage
- ✓ Reopen stored files to continue measurements
- ✓ Export the data to a PC via the Profometer-Link software

Profometer® 630 AI

Advanced Scan Cover Meter

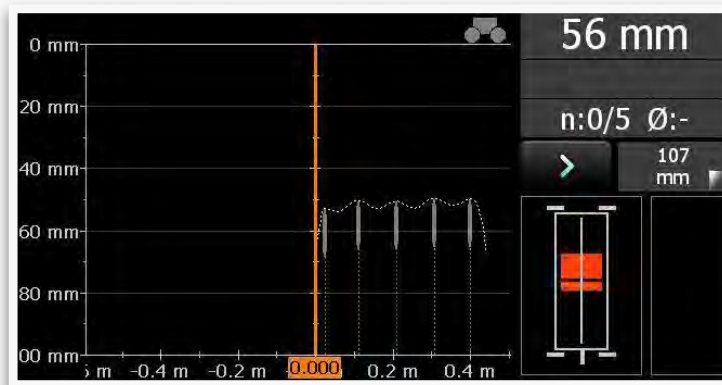
Profometer 630 AI Overview

The sophisticated Profometer 630 AI further enhances the application range of the Profometer 600 with the Single-Line, Multi-Line and Area Scan Modes and an extensive choice of statistical views, increasing productivity for civil engineers and inspection companies in charge of assessing the conformity of concrete cover of a new structure (quality check and fire resistance assessment) or dealing with corrosion analysis on large elements.

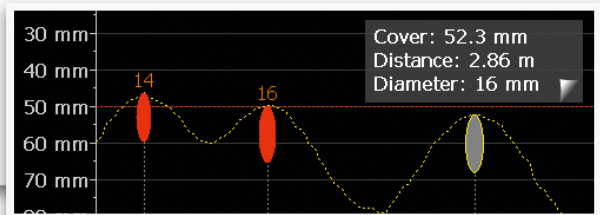
Single-Line Scan

Linear scan of the cover across the first layer of rebars over a long distance, with or without diameter measurement.

- ✓ Measuring over long distances
- ✓ Signal curve allows the user to manually verify and confirm the rebar position delivering an improved resolution
- ✓ Zoom in to scale according to your needs
- ✓ Display with cover curve or signal strength curve



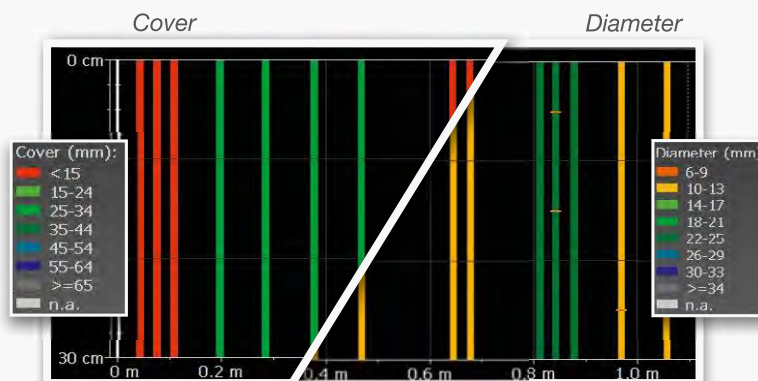
Red color for easy identification of minimum cover violation



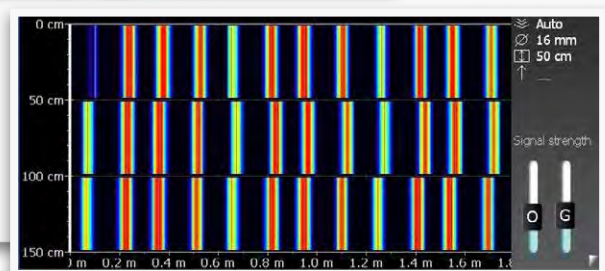
Multi-Line Scan

Multiple linear scans across the first layer of rebars over a rectangular area. Cover, diameter and signal strength spectrum are shown in one view. Each line can be viewed individually in the Single-Line View.

- ✓ Color classification depending on cover and rebar diameter settings
- ✓ Signal strength spectrum for further evaluation



Signal strength spectrum



Profometer® 630 AI

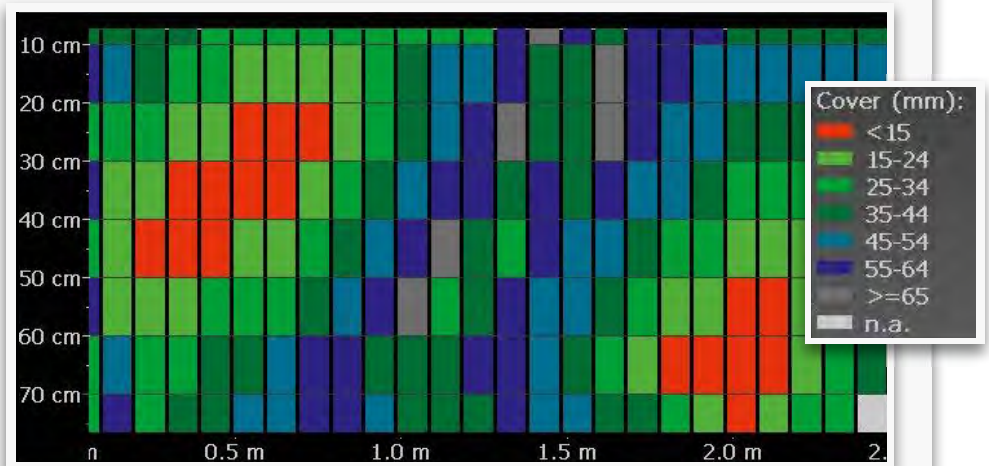
Advanced Scan Cover Meter

Area Scan

The grid display of the Area Scan Mode allows a simplified view of the measured cover data.

It is best suited for a combination with potential field measurements.

- ✓ Individual grid size can be selected
- ✓ Use in combination with Profometer Corrosion half-cell potential measurements for corrosion analysis

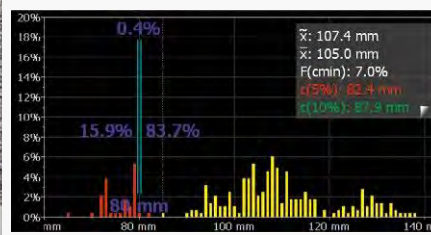


Use the Multi-Line and Area Scan for:

- » Retaining walls
- » Concrete slab soffits
- » Bridge slabs
- » Reinforced walls and slabs



Special statistic view according to DBV*



*German Concrete and Construction Association

Profometer® 650 AI

Advanced Cross-Scan Cover Meter

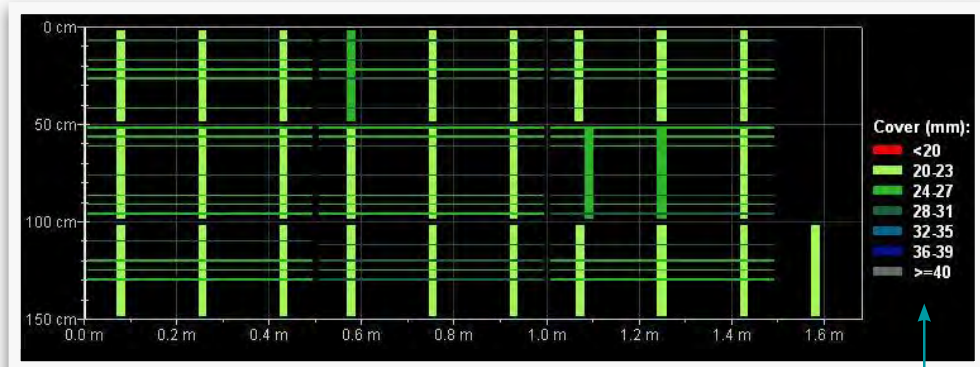
Profometer 650 AI Overview

The Profometer 650 AI extends the features of the Profometer 630 AI further still with the unique Cross-Line Scan measuring mode and analysis functions. Full reporting features available, as required on large investigation campaigns where a comprehensive report is to be delivered to the client.

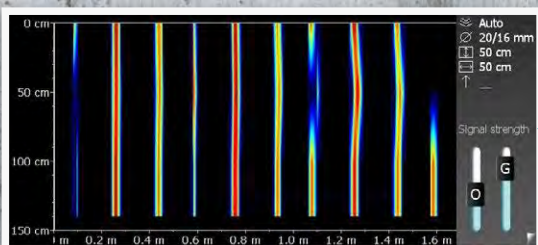
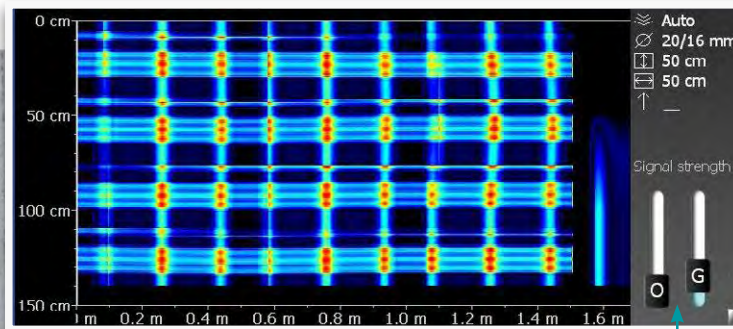
Cross-Line Scan

The 2D Cross-Line Scan extends the Multi-Line Scan with the special functionality of combining scans in the X- and Y-directions.

- ✓ Measuring the rebars of the first and second layer typically arranged in a rectangular mesh
- ✓ The signal strength spectrum can be seen in addition to the cover and diameter



Tap on the screen to switch between Cover, Diameter and Signal Strength View



By changing the Offset- and Gain-slider positions the signal strength range and resolution can be set and accordingly shown in a color spectrum, for example to display the first layer of rebars.

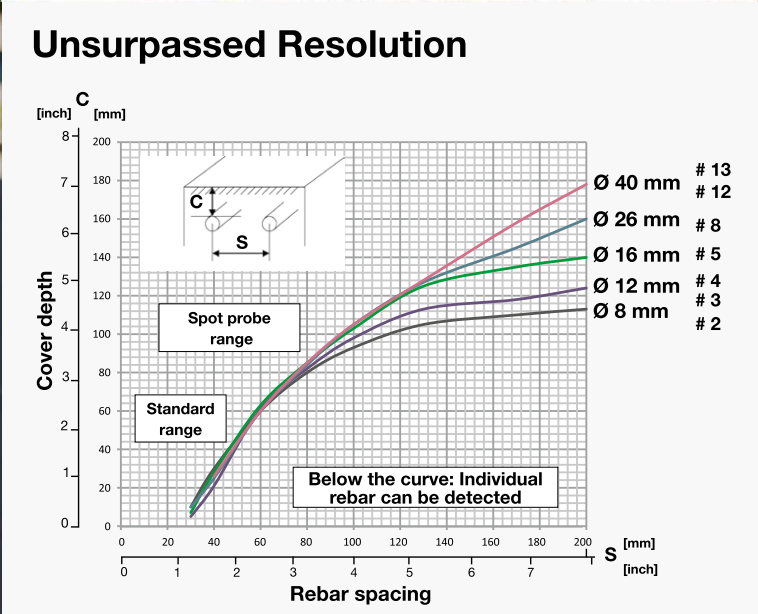
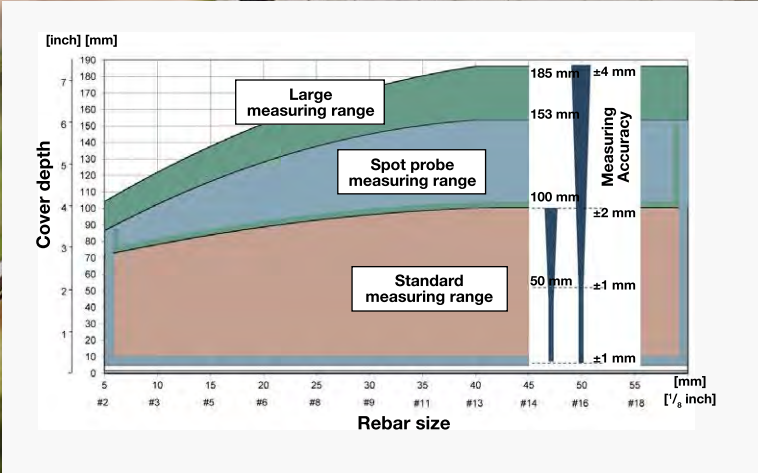


Profometer® Cover Meter

Measuring Range



Telescopic extension rod with 3 meter (10 ft) probe cable especially suited for ceilings, high columns, and for comfortable floor scanning



The Technology

The Profometer 6 instruments use **eddy current pulse induction technology** to detect rebars. Multiple coil arrangements in the probe are periodically charged by current pulses and thus generate a magnetic field.

On the surface of any electrically conductive material which is in the magnetic field eddy currents are produced. They induce a magnetic field in the opposite direction. The resulting change in voltage can be utilized for the measurement.

Advanced signal processing allows localization of a rebar, determination of the cover and estimation of the rebar diameter. This method is unaffected by all non conductive materials such as concrete, wood, plastics, bricks etc.

However any kind of conductive materials within the magnetic field will have an influence on the measurement.

Profometer® Corrosion

Corrosion Analysis Instrument

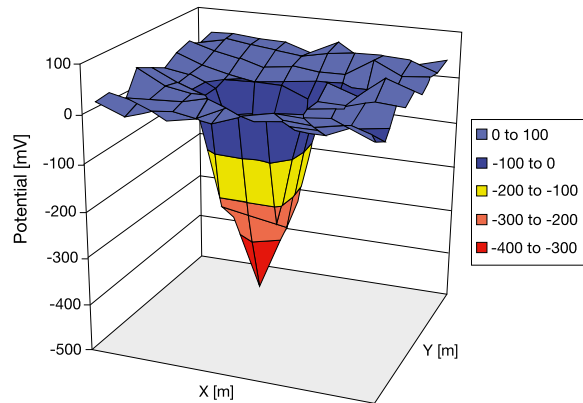
The Technology

The half-cell method is used to identify active corrosion of re-bars based on the electro chemical properties of reinforced concrete. **All the Proceq electrodes (rod or wheel) are based on a Copper / Copper Sulphate (Cu/CuSO₄) half-cell.** However specific applications or customer preferences sometimes require different reference electrodes. This is why the Profometer Corrosion voltage input range allows also the connection of Silver / Silver Chloride (Ag/AgCl) electrodes or Saturated Calomel (Hg/Hg₂Cl₂) reference electrode. **The standard cable supplied with the Proceq rod electrode can be easily connected to most third party rod electrodes allowing the full compatibility of the system.**

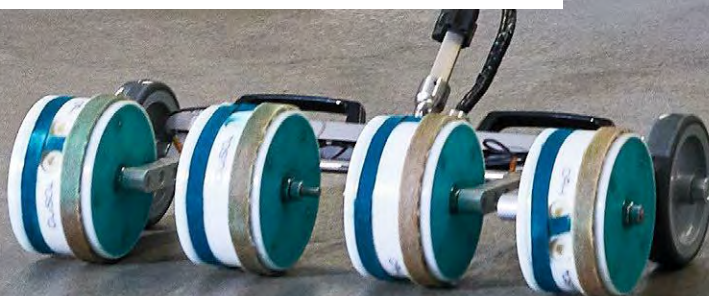


The detection of the hot spots where active corrosion begins involves the measuring of the localized negative values of the half-cell potential (i.e. corrosion potential). When using a rod electrode the user has to define a grid fine enough not to

miss any local negative peak, while the use of a wheel electrode on the new Profometer Corrosion ensures a new level of accuracy. **The wheel system is fast enough to measure the electrical potential continuously along its linear paths, ensuring the most negative measured value will always be recognized and stored with its associated location.**



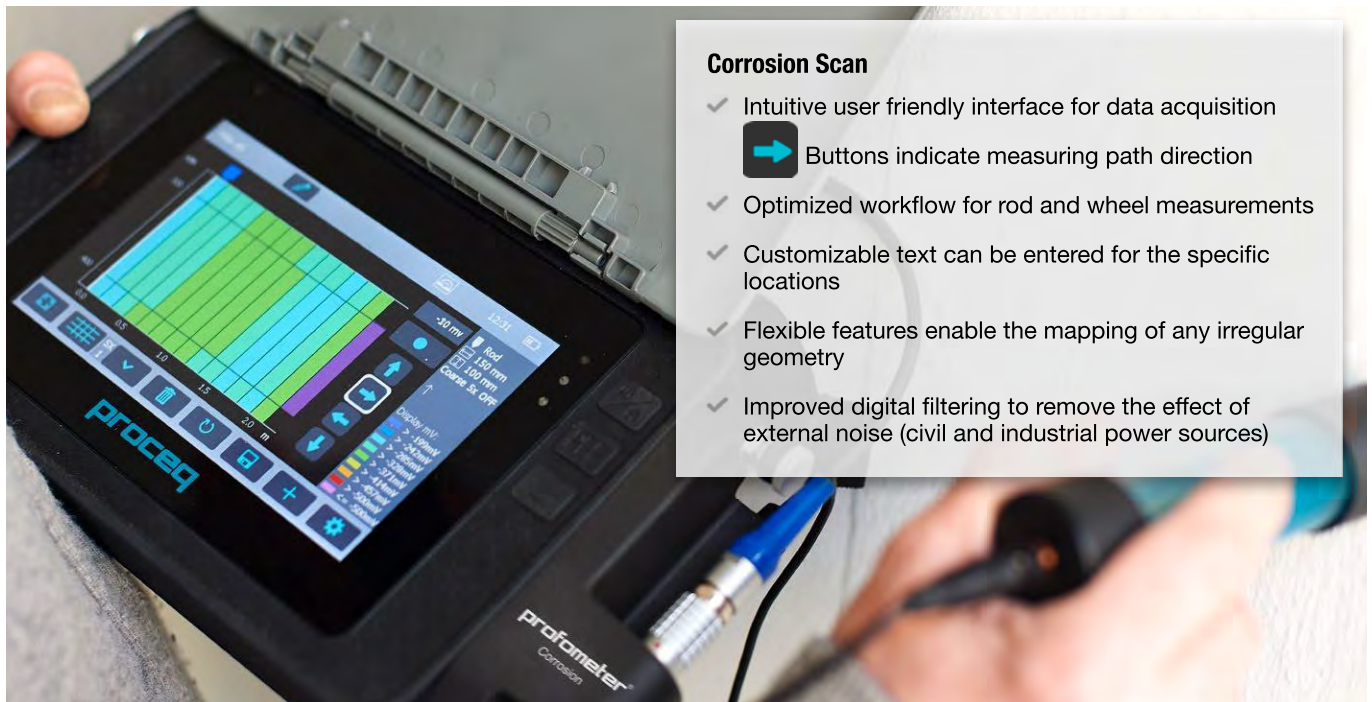
The electrical potential distribution over a corroding area can be represented as a “funnel” centered on the anode, whose shape and extent is defined by the actual ongoing corrosion as well as by the concrete electrical resistivity



Profometer® Corrosion Corrosion Analysis Instrument

Profometer Corrosion Overview

As the direct successor to the Canin, the Profometer Corrosion represents the most advanced corrosion instrument in the market based on the half-cell method. In addition to the basic rod electrode, the use of Proceq's unique one and four wheel electrodes enables the highest on site productivity on large areas.

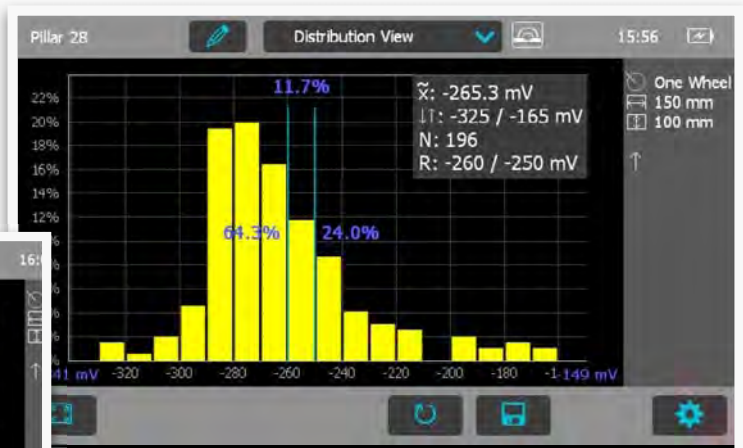
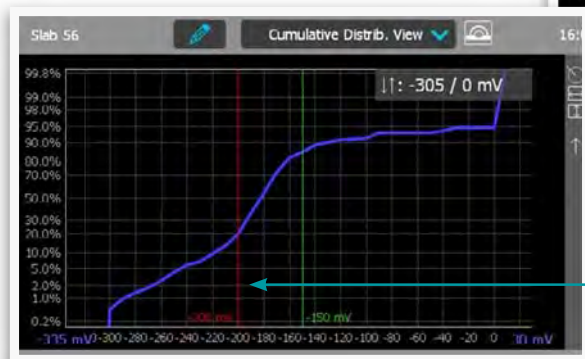


Corrosion Scan

- ✓ Intuitive user friendly interface for data acquisition
 - ➔ Buttons indicate measuring path direction
- ✓ Optimized workflow for rod and wheel measurements
- ✓ Customizable text can be entered for the specific locations
- ✓ Flexible features enable the mapping of any irregular geometry
- ✓ Improved digital filtering to remove the effect of external noise (civil and industrial power sources)

Statistical Views

- ✓ Immediate on site data interpretation
- ✓ Customizable Distribution, Cumulative Distribution, Chipping Graph Views
- ✓ Predefined ASTM compliant layout



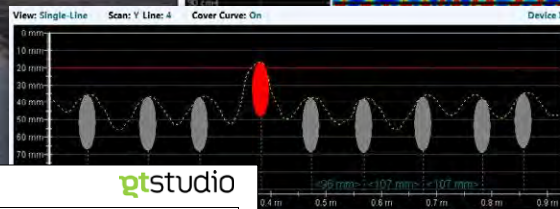
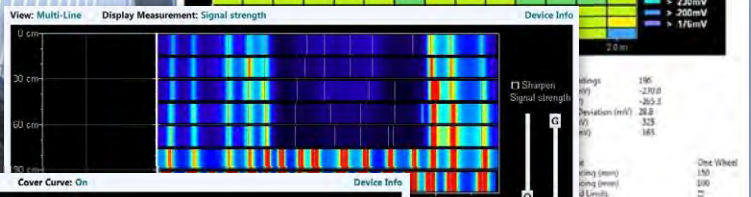
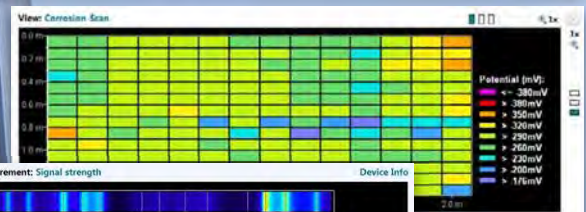
Adjustable cursors defining corrosion thresholds

Profometer® Link PC Tool

Profometer Link - A combined PC tool

Proceq Profometer Link PC tool is included with all Profometer 6 Cover Meter and Profometer Corrosion units. It is based on an integrated suite enabling the user to process the data coming from rebar detection / concrete cover as well as corrosion potential measurement. The Profometer units can be connected to the PC via USB and the software is fully compatible with Windows 7, 8 and 10 (32- and 64-bit).

- ✓ All features available on the touchscreen unit are also implemented on the PC
- ✓ Create custom reports with exported graphs and charts
- ✓ Support for the merging of several corrosion scans into a single graph
- ✓ Picture and table export (csv files) for further processing, combined data evaluation and reporting on any third party software



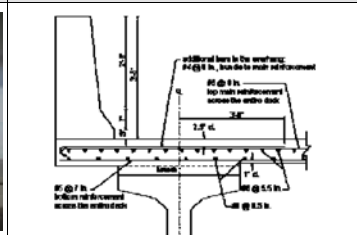
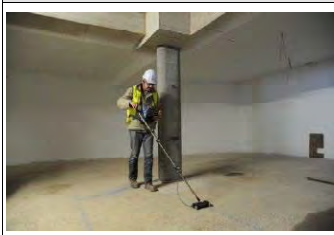
Statistics of Covers (Normal)	
No. of Readings	99
Median (mm)	24.5
Mean (mm)	28.0
Standard Deviation (mm)	14.7
Lowest (mm)	2
Highest (mm)	69

ET051/13 - All.

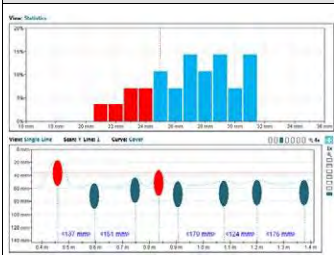
gtstudio

LOCATION: UG Slab H12

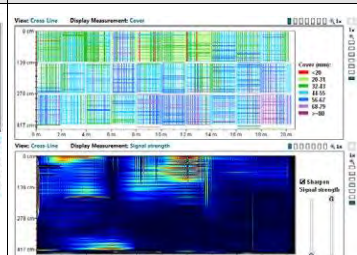
Pic / Graph



Pic / Graph

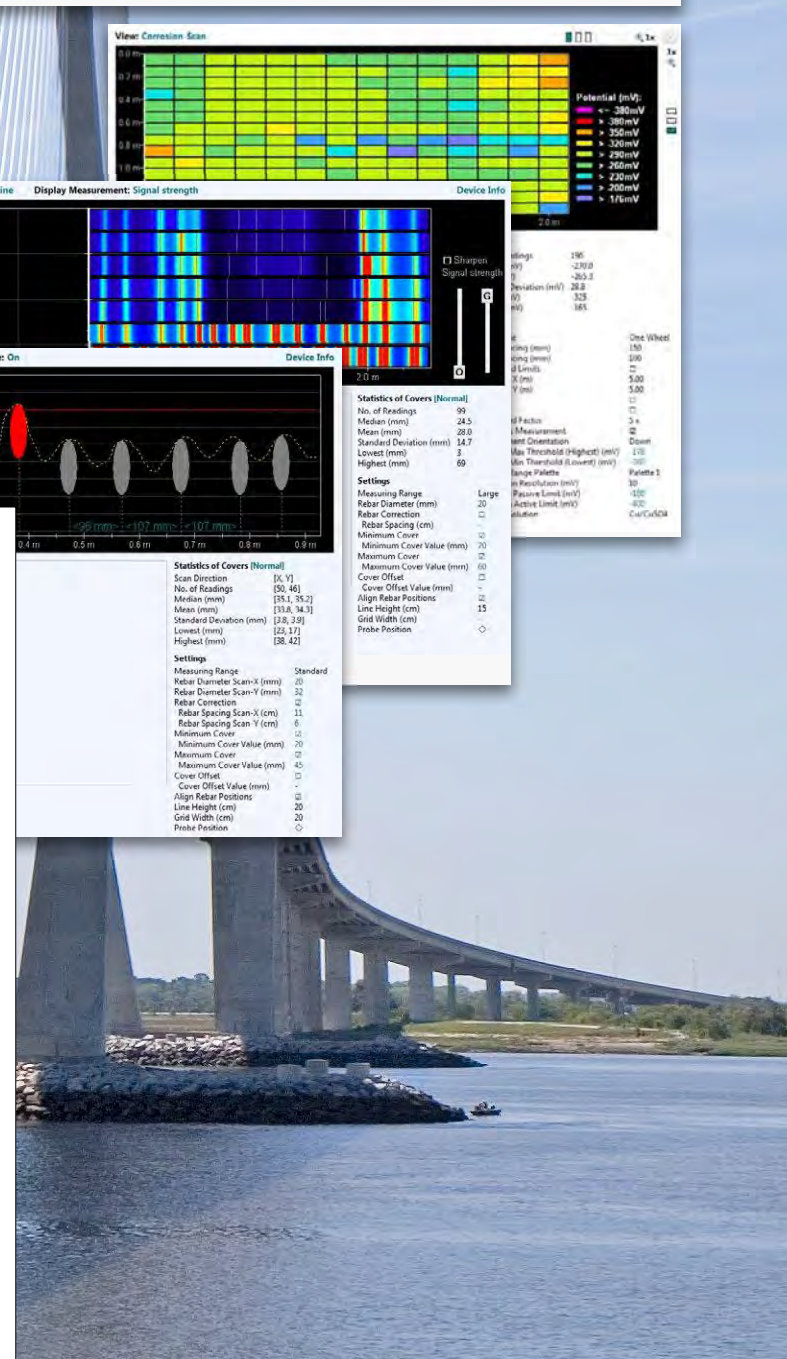


Pic / Graph



DATA

Snapshots (mm mm mm)	(Distance) Cover(mm)	Statistics of Covers (Normal)
1.031	(2.341 45.1)	(13.714 39.7) (5.462 35.9) (8.030 24.8) (10.463 37.6)
1.032	(2.795 41.9)	(18.808 43.8) (5.531 35.8) (8.195 24.7) (10.603 38.7)
1.033	(3.205 41.5)	(19.015 41.5) (5.652 45.1) (8.322 11.2) (10.735 34.7)
1.034	(3.650 36.5)	(1.889 42.5) (8.827 47.4) (8.505 20.4) (10.850 33.3)
1.035	(4.045 35.0)	(1.095 42.8) (5.784 52.5) (8.623 28.4) (10.971 31.2)
1.036	(4.480 38.4)	(4.091 41.1) (8.106 30.8) (8.758 29.8) (11.098 30.8)
1.037	(4.855 44.0)	(1.136 37.8) (8.268 37.8) (8.901 29.9) (11.222 29.2)
1.038	(5.165 46.2)	(1.805 35.7) (8.431 39.8) (9.009 31.2) (11.342 28.0)
1.039	(5.415 49.3)	(1.409 32.8) (8.474 28.2) (9.162 24.2) (11.528 27.3)
1.040	(5.515 49.6)	(1.631 34.8) (8.520 41.3) (9.270 29.2) (11.642 25.8)
1.041	(5.560 49.2)	(1.649 33.2) (8.752 63.0) (9.382 34.8) (11.818 24.0)
1.042	(5.600 44.9)	(1.695 32.8) (8.996 30.2) (9.494 26.4) (11.977 22.0)
1.043	(5.635 46.5)	(1.802 34.3) (9.139 52.5) (9.572 16.7) (12.076 19.9)
1.044	(5.665 44.4)	(1.879 33.1) (9.234 50.1) (9.723 36.0) (12.151 29.4)
1.045	(5.695 42.9)	(1.960 34.4) (9.359 48.2) (9.836 39.9) (12.208 34.2)
1.046	(5.720 42.9)	(1.950 33.8) (9.500 33.8) (9.968 37.3) (12.210 30.2)
1.047	(5.745 39.9)	(1.910 31.7) (9.700 35.2) (10.094 44.3) (12.261 32.3)
1.048	(5.765 42.7)	(1.939 42.7) (9.709 30.7) (9.851 47.8) (12.314 34.8)
1.049	(5.785 40.8)	(1.939 29.8) (9.903 32.8) (10.330 37.4) (12.407 25.3)



Technical Specifications

Profometer 6 Cover Meters

Cover measuring range	Up to 185 mm (7.3 inch)
Cover measuring accuracy	± 1 to ± 4 mm (0.04 to 0.16 inch)
Measuring resolution	Depending on diameter and cover
Path measuring accuracy on smooth Surface	± 3 mm (0.12 inch) + 0.5% to 1.0% of measured length
Diameter measuring range	Cover up to 63 mm (2.50 inch), Diameter up to 40 mm (# 12)
Diameter measuring accuracy	± 1 mm (\pm # 1) on single rebar
Standards and guidelines	BS 1881-204, DIN 1045, DGZfP B2, SN 505262, SS 78-B4, DBV guidelines, CE certification

Profometer Corrosion

Voltage measuring range	-1000 to + 1000 mV
Voltage resolution	1 mV
Impedance	100 M Ω
Sampling rate	900 Hz
Standards and guidelines	ASTM C876, RILEM TC 154-EMC, DGZfP B3, SIA 2006, UNI 10174, JGJ/T 152, JSCE E 601, CE certification

Profometer Touchscreen Universal

Display	7" colour display 800x480 pixels
Memory	Internal 8 GB flash memory
Regional settings	Metric and imperial units and multi-language and timezone supported
Power input	12 V +/-25 % / 1.5 A
Dimensions	250 x 162 x 62 mm
Weight (of display device)	About 1525 g (incl. battery)
Battery	3.6 V, 14 Ah
Battery lifetime	> 8h (in standard operating mode)
Humidity	< 95 % RH, non condensing
Operating temperature	-10°C to +50°C
IP classification	Touchscreen IP54, universal probe IP67

NDT Training on rebar assessment and corrosion analysis

Proceq's training modules are strongly focused on a practical approach to routine testing of in-situ concrete quality, as well as on user specific applications using the Profometer products. Visit our website or contact your Proceq representative.



Ordering Information

Upgrade kits

Cover Meters

Corrosion



Cover meter

392 10 001 Profometer 600
 consisting of Profometer touchscreen, universal probe with ruggedized scan cart, probe cable 1.5 m (5 ft), power supply, USB cable, chalk, DVD with software, documentation, carrying strap and carrying case

392 50 001 Profometer Corrosion
 consisting of Profometer touchscreen, interface box, battery charger, cable coil l=25 m (82 ft) with clamp, USB cable, DVD with software, documentation, carrying strap and carrying case

392 001 15 Software upgrade (activation key)

Spot checks

Ideal for line and area scans

Scanning areas at 4x speed

Scan cover meter

392 20 001 Profometer 630 AI
 consisting of Profometer touchscreen, universal probe with ruggedized scan cart, probe cable 1.5 m (5 ft), power supply, USB cable, chalk, DVD with software, documentation, carrying strap and carrying case

392 50 010 Profometer Corrosion rod electrode
 with spare parts, cable and copper sulphate (250 g)

330 01 001 Profometer Corrosion one wheel electrode
 with telescopic rod 1.7 m (5.6 ft), encoder, cables, spare parts, tool kit, copper sulphate (250 g), citric acid

330 01 004 Profometer Corrosion four wheel electrode
 with telescopic rod 1.7 m (5.6 ft), encoder, cables, spare parts, tool kit, copper sulphate (250 g), citric acid (250 g), carrying case

392 001 16 Software upgrade (activation key)

Cross-scan cover meter

392 30 001 Profometer 650 AI
 consisting of Profometer touchscreen, universal probe with ruggedized scan cart, probe cable 1.5 m (5 ft), power supply, USB cable, chalk, DVD with software, documentation, carrying strap and carrying case



392 50 002 Upgrade kit to Profometer Corrosion
 consisting of interface box, cable coil, l=25 m (82 ft) with clamp, DVD with software, documentation and carrying case

Upgrade kits

392 50 003 Upgrade kit to Profometer 600 Cover Meter
 consisting of universal probe with ruggedized cart, probe cable 1.50m (5ft), software upgrade to cover meter

Accessories

392 40 040 Profometer 6 telescopic extension rod 1.7 m (5.6 ft) with probe cable 3 m (10 ft)

330 00 322 Profometer Corrosion telescopic extension rod for rod electrode 1.7 m (5.6 ft), with 3 m (10 ft) cable

327 01 053 Quick charger (external) for touchscreen unit

356 00 082 Display antiglare protection film for touchscreen unit

327 01 033 Spare battery

Service and Support


Proceq is committed to providing the best support and service available in the industry through the Proceq certified service centers worldwide. This results in a complete support for the Profometer by means of our global service and support facilities.

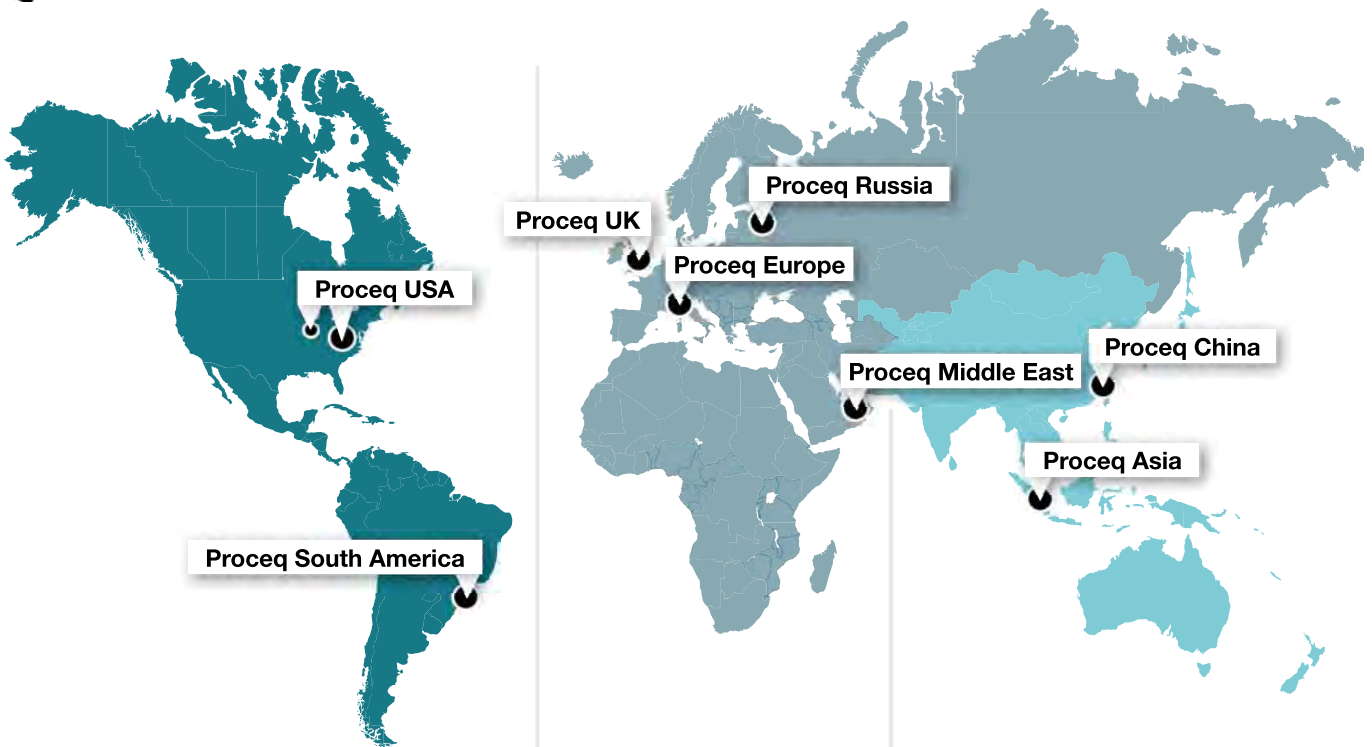
Warranty Information

Each instrument is backed by the standard Proceq warranty and extended warranty options.

- » Electronic portion of the instrument: 24 months
- » Mechanical portion of the instrument: 6 months

Subject to change without notice. All information contained in this documentation is presented in good faith and believed to be correct. Proceq SA makes no warranties and excludes all liability as to the completeness and/or accuracy of the information. For the use and application of any product manufactured and/or sold by Proceq SA explicit reference is made to the particular applicable operating instructions.

 Click on the Proceq subsidiaries for more information



Proceq USA

Aliquippa, PA, USA
 Phone +1 724 512 0330
 Fax +1 724 512 0331
info-usa@proceq.com

Gurnee, IL, USA
 Phone +1 847 623 9570
 Fax +1 847 623 9580
info-usa@proceq.com

Proceq South America

São Paulo, Brasil
 Phone +55 11 3083 38 89
info-southamerica@proceq.com

Proceq Europe

Schwerzenbach, Switzerland
 Phone +41 43 355 38 00
 Fax +41 43 355 38 12
info-europe@proceq.com

Proceq UK

Bedford, UK
 Phone +44 12 3483 4515
info-uk@proceq.com

Proceq Russia

St. Petersburg, Russia
 Phone +7 812 448 35 00
 Fax +7 812 448 35 00
info-russia@proceq.com

Proceq Middle East


Sharja, United Arab Emirates
 Phone +971 6 557 8505
 Fax +971 6 557 8606
info-middleeast@proceq.com

R. B. M. ^{Ltd.}


CONTROL & MECHANIZATION

www.rbmltd.co.il 09-7674431:סל
rbmltd@rbmltd.co.il כפר סבא



 E-Shop USA

 E-Shop Europe

 E-Shop Asia



Globally organized seminars to help you learn more about our products and applications.
 Contact your local representative for further information.

Proceq SA

Ringstrasse 2
 8603 Schwerzenbach
 Switzerland